

Analysis – Portfolio Overview

Accessing the Portfolio Overview function:

- 1 Select the **Portfolio Analysis** tab.
- 2 From the menu bar, go to **Analysis – Portfolio Overview**.

This function provides you with a global overview of the state of the selected portfolio, its positions, performances, transactions...

The screenshot displays the 'Portfolio Overview' page in the ING web interface. At the top, there's a navigation bar with 'ING - Analysis - Order Management' and a user profile. Below this, the 'Portfolio Overview' section includes a search bar and filters for 'Portfolio', 'Instrument Set', 'Currency', 'Load Hierarchy', and 'Include Null Position'. The main content area is divided into several sections:

- Portfolio Summary:** A table showing key metrics for Portfolio 'P':

Portfolio	Market Value	Net Cost Value	Mgt Begin Date	Perf Begin Date
P	421,770.58 EUR	300,038.84 EUR	Feb 25, 2015 12:00 AM	Feb 25, 2015 12:00 AM
- Portfolio Performance YTD:** A table showing performance data:

Investment 1Y	Withdrawal 1Y	Portfolio Return 1Y
130.48	-605.00	-10.55
- Portfolio Breakdown by Asset Class and by Currency:** A table showing the breakdown of the portfolio by asset class and currency:

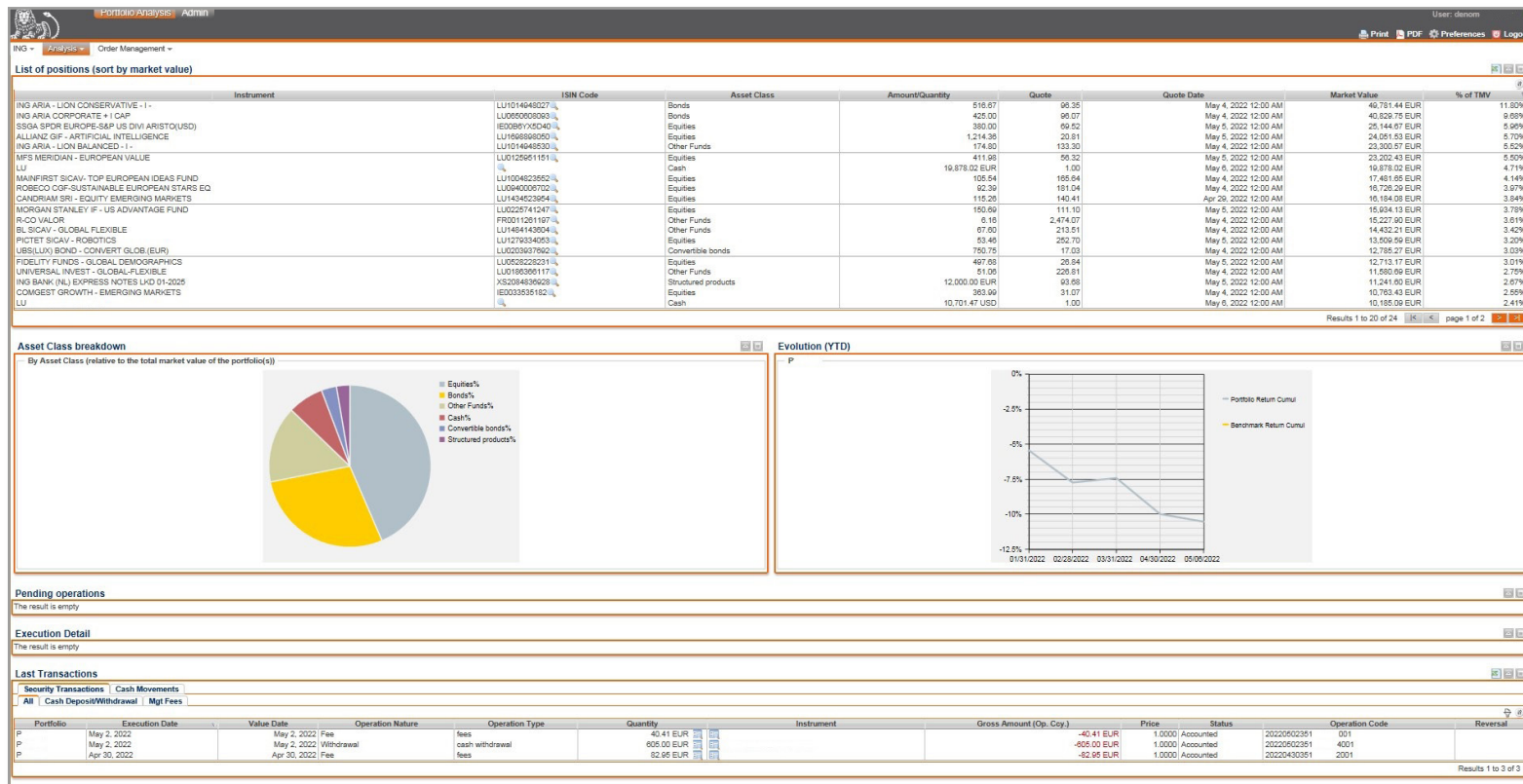
Asset Class	EUR (%)	EUR Value	USD (%)	USD Value	JPY (%)	JPY Value
Cash	4.71%	19,878.02 EUR	2.41%	10,185.09 EUR	7.13%	30,093.11 EUR
Bonds	23.76%	100,217.36 EUR	4.60%	19,383.58 EUR	28.36%	119,600.93 EUR
Convertible bonds	3.03%	12,785.27 EUR			3.03%	12,785.27 EUR
Equities	20.65%	87,104.04 EUR	21.01%	88,806.93 EUR	43.52%	183,538.30 EUR
Other Funds	15.30%	64,541.37 EUR			15.30%	64,541.37 EUR
Structured products	2.67%	11,241.00 EUR			2.67%	11,241.00 EUR
Total	70.13%	295,767.65 EUR	28.02%	118,176.69 EUR	1.86%	7,827.33 EUR
- Breakdown by Asset Class and by Region:** A table showing the breakdown of the portfolio by asset class and region:

Asset Class	Other (%)	Other Value	Europe (%)	Europe Value	North America (%)	North America Value
Cash			4.71%	19,878.02 EUR	2.41%	10,185.09 EUR
Bonds	28.36%	119,600.93 EUR			28.36%	119,600.93 EUR
Convertible bonds	3.03%	12,785.27 EUR			3.03%	12,785.27 EUR
Equities	43.52%	183,538.30 EUR			43.52%	183,538.30 EUR
Other Funds	15.30%	64,541.37 EUR			15.30%	64,541.37 EUR

Portfolio overview 1

Your portfolio on My ING Pro with the Triple'A Web User Interface

Analysis – Portfolio Overview



Portfolio overview 2